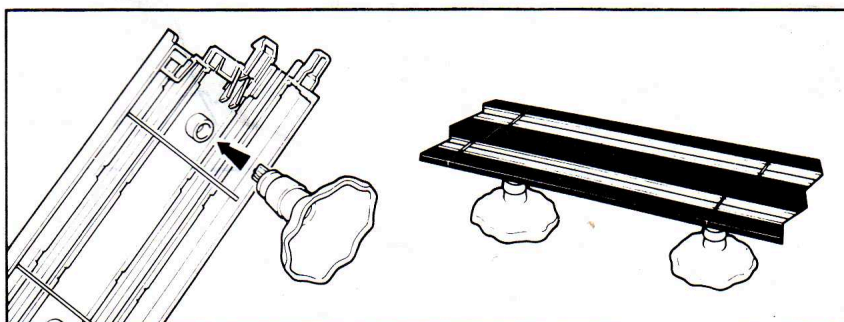
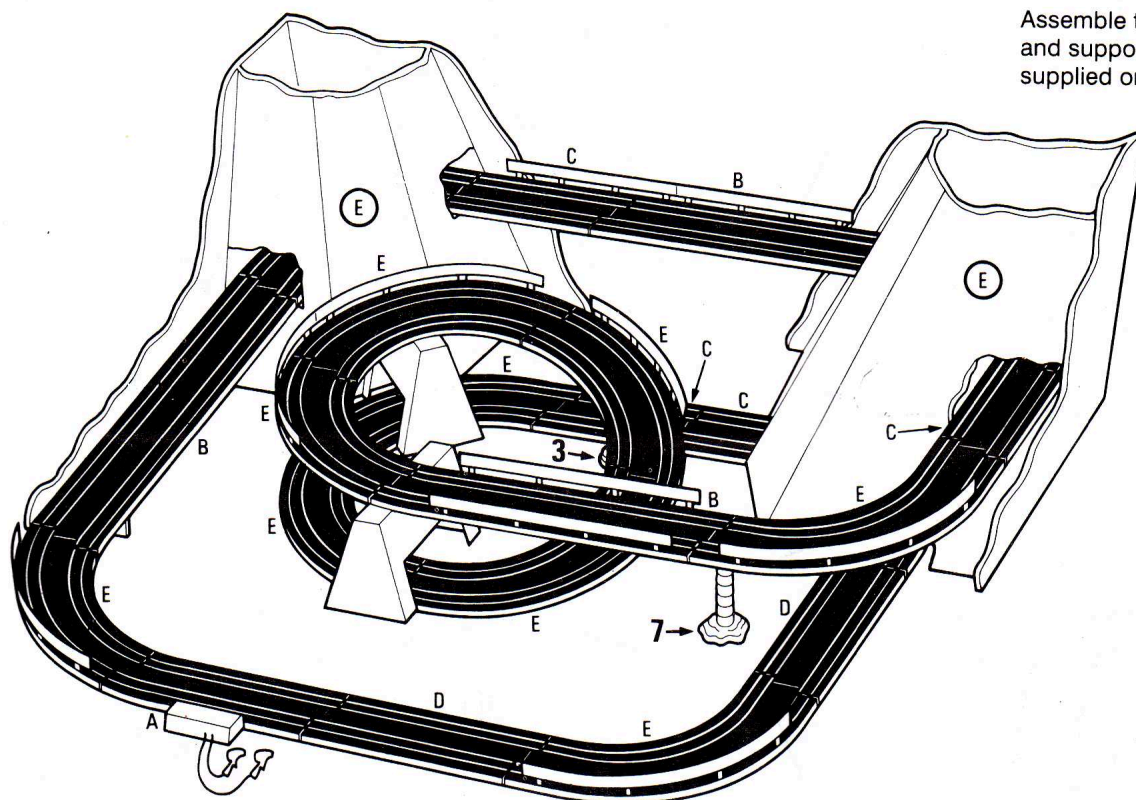


## FRONTERA MOUNTAIN RALLY

### RACING DRIVERS' & TRACK MARSHALLS' BRIEFING NOTES

Assemble the track as shown in the diagram and support the track with the track supports supplied on the levels shown.



#### RUNNING TIPS

- For best results, place the track supports and scenery in the positions marked on the Track Layout diagram.
- Remember: SLOW into corners, EASY on the bridge and the spiral and FAST out of the corners.

THE TRACK LAYOUT DIAGRAM ALSO SHOWS THE BEST POSITIONS FOR THE CRASH BARRIERS.

#### CONTENTS / PARTS LIST

In the event of requesting replacement parts, please quote the part numbers given below. Please see the MicroScalextric Guarantee and Registration Card for further details.

1 x G088 Frontera Red	12 x G105 12" Curves (E)	10 x L7557 Track Support Spacer
1 x G087 Frontera Blue	4 x G103 6" Straights (C)	2 x L7558 Track Support Plug
1 x C183 BLUE Hand Controller	2 x G102 9" Straights (D)	10 x L7559 Crash Barriers
1 x C180 YELLOW Hand Controller	3 x G101 15" Straights (B)	1 x M3512 Card Buildings and Scenery
1 x C912 Power Unit	2 x L7556 Track Support Base	1 x W1502 Braid/Guide Pin pack
1 x W1503 Power Base Track (A)		

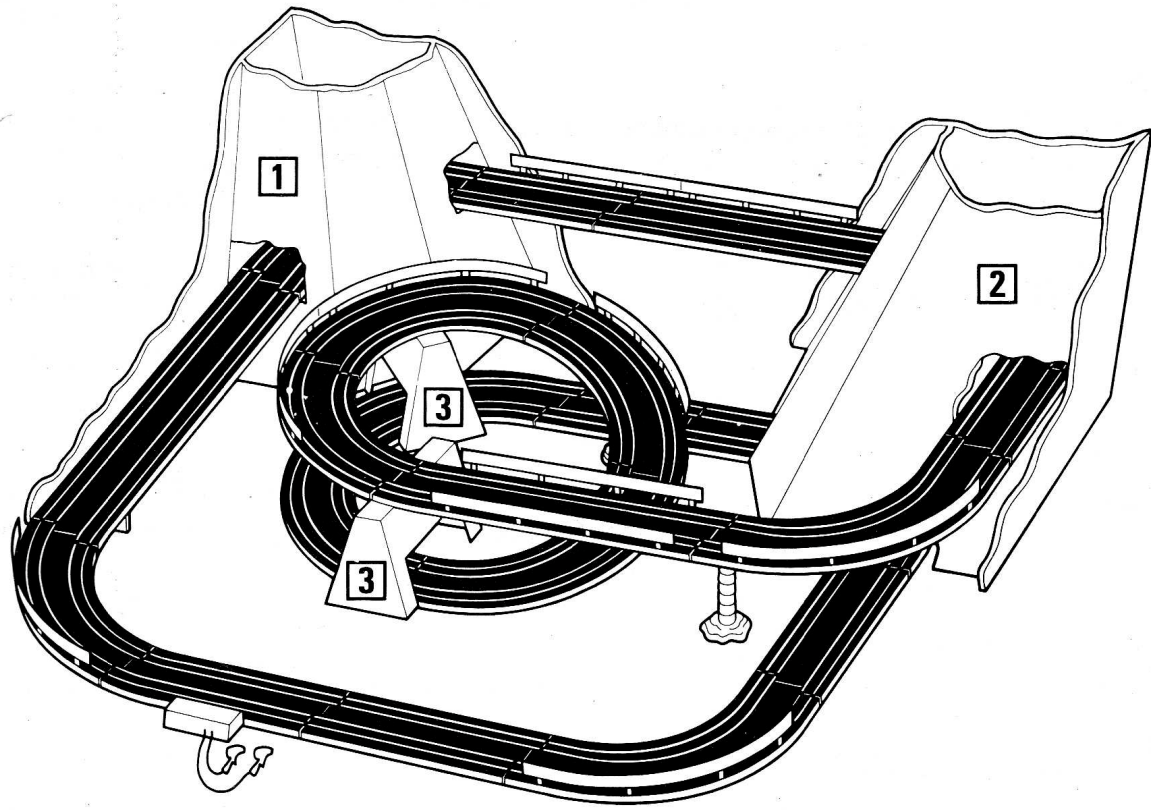
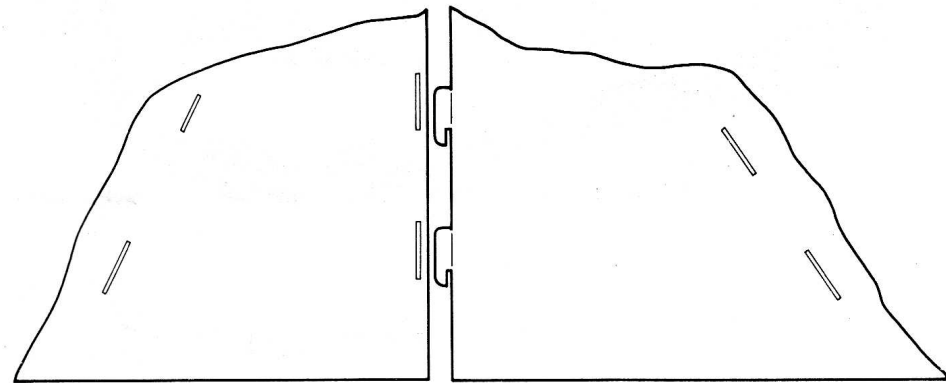
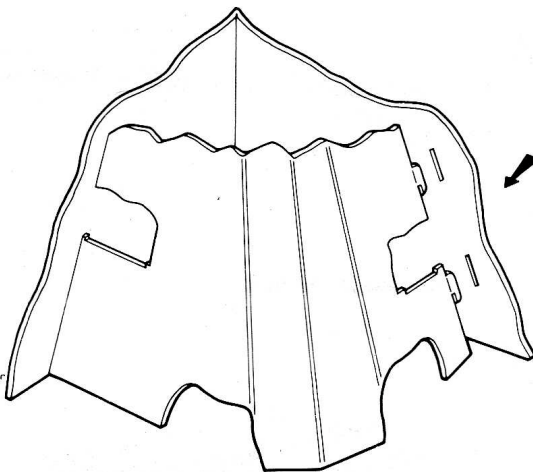
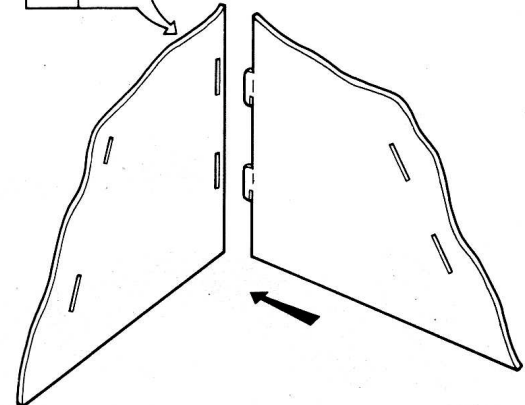
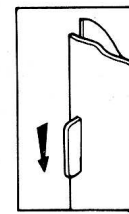
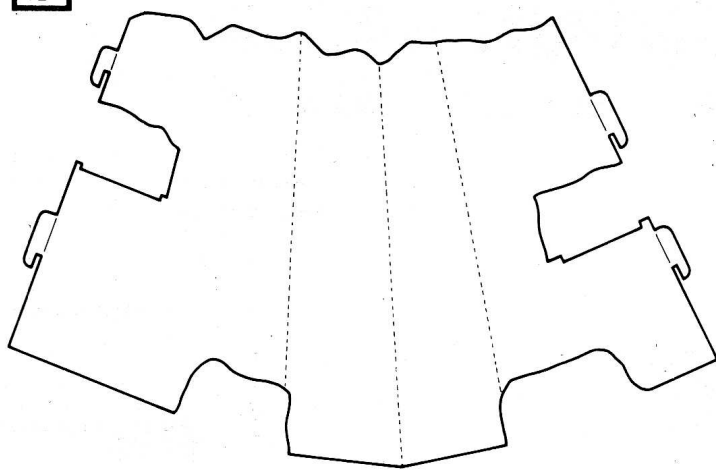
#### DOCUMENTS / LEAFLETS \*

1 x Instruction Leaflet	1 x Scalextric/MicroScalextric Service Dealer list
1 x Hornby Registration Card	1 x MicroScalextric Guarantee
1 x Drivers' and Marshalls' Briefing Notes sheet	

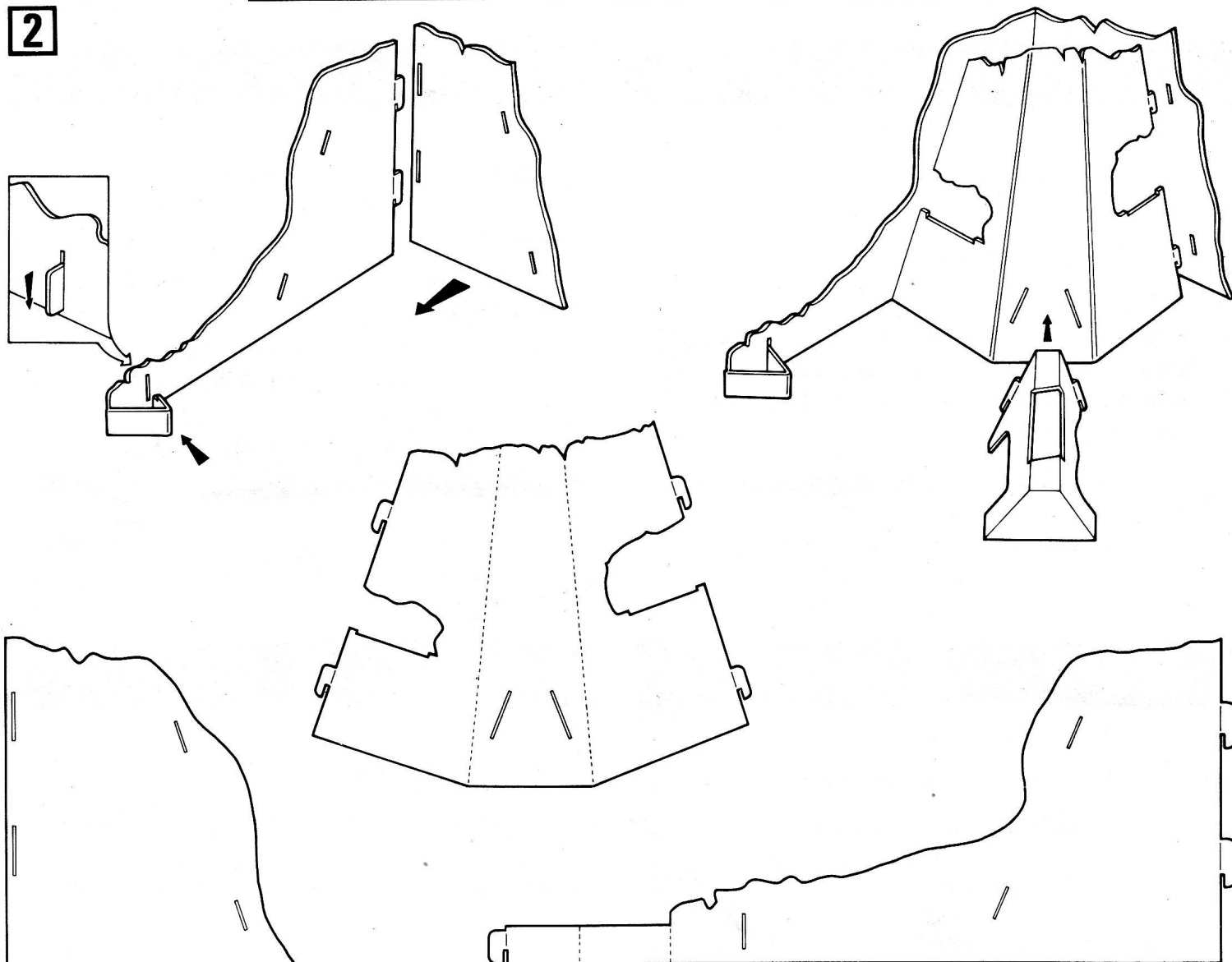
\*These documents / leaflets can be found on the top of the box with the track sections or in the main box base.

**HORNBY HELPLINE: 01843 299413. MON-FRI 9.00am to 4.00pm**

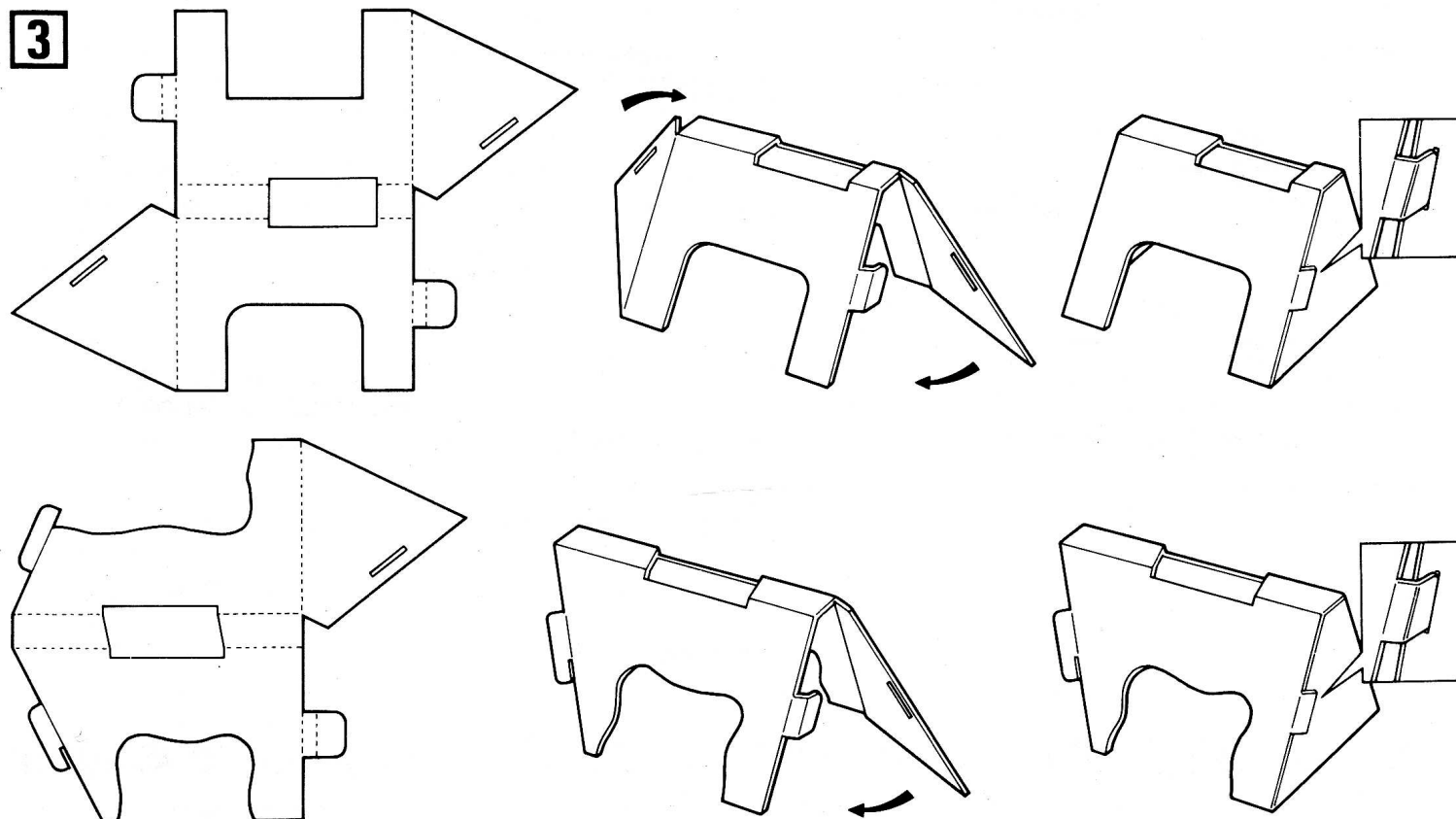
1



**2**



**3**





## DRIVING AND RACING HINTS 'n' TIPS



MicroScalextric cars will require a level of skill to drive them at their best.

- Start slowly for the first few practise laps; exactly like the very best Formula One drivers.
- Accelerate and slow down smoothly. If you accelerate too fast, you will see a lot of spectacular crashes, but you will also lose most of the races.
- Go fast down the straights, slowing down as you enter the corners and accelerate as you come out of them. Take it easy over the bridges.

- Watch your car as you are driving. You will learn to leave your braking to the last second as you approach a bend.

Before asking for help or service, please read the instructions again.

Most operating difficulties can be easily rectified by making a small adjustment to the braid or simply cleaning the affected part.

The most common cause of a malfunction will be a car's worn braid. Also, poor running may be caused by fluff or hair trapped around the moving parts. This may be easily removed with a brush or tweezers.



## FAULT-FINDING GUIDE



PROBLEM	CAUSE	ACTION
Cars will not run	<ul style="list-style-type: none"> <li>● Power Pack not turned on.</li> <li>● Incorrect wiring.</li> <li>● Guide Pin or Braid not making contact with track.</li> <li>● Dirty Braid.</li> <li>● Dirty Track.</li> <li>● 240V household outlet not working.</li> <li>● Overload protector tripped due to short circuit or overheating.</li> <li>● Faulty Power Pack.</li> <li>● Faulty Hand Controller.</li> <li>● Faulty Car.</li> </ul>	<ul style="list-style-type: none"> <li>● Turn on the power at the mains.</li> <li>● Check wiring from hand controllers to the track and the power pack.</li> <li>● Position the car with its guide pin in the slot between the metal rails. Bend braids slightly to make contact with the metal rails.</li> <li>● Replace braid or guide pin assembly (see main instructions leaflet for guidance).</li> <li>● Wipe metal rails clean with a lint-free cloth – DO NOT USE SANDPAPER, OTHER ABRASIVE MATERIALS OR LIQUID.</li> <li>● Change to another 240V outlet.</li> <li>● Unplug the power unit, or switch off at the mains. After 30-45 seconds, the overload protector will reset and you can continue racing. Check the track and cars to ensure the cause of the short circuit has been removed.</li> <li>● IMPORTANT: NEVER ATTEMPT TO OPEN POWER PACK.</li> <li>● Swap hand controller to other track. If still not working, replace hand controller.</li> <li>● Only after carrying out all of the above and your cars will still not run should you call the Hornby Helpline.</li> </ul>
Cars run slowly or erratically	<ul style="list-style-type: none"> <li>● Dirty track.</li> <li>● Dirty or worn braid.</li> </ul>	<ul style="list-style-type: none"> <li>● Wipe metal rails clean with a lint-free cloth. NEVER USE SANDPAPER, OTHER ABRASIVE MATERIALS OR LIQUID.</li> <li>● Replace braid (see main instructions leaflet for guidance).</li> </ul>
Excessive crashes	<ul style="list-style-type: none"> <li>● Twisted track.</li> <li>● Worn guide pin.</li> <li>● Incorrect braid position.</li> <li>● Poor driving technique.</li> </ul>	<ul style="list-style-type: none"> <li>● Straighten track making sure that bridges etc. are well supported.</li> <li>● Replace guide pin (see main instructions leaflet for guidance).</li> <li>● Flatten braid onto the chassis (see main instructions leaflet for guidance).</li> <li>● SLOW DOWN!</li> </ul>

**HORNBY HELPLINE: 01843 299413. MON-FRI 9.00am to 4.00pm**